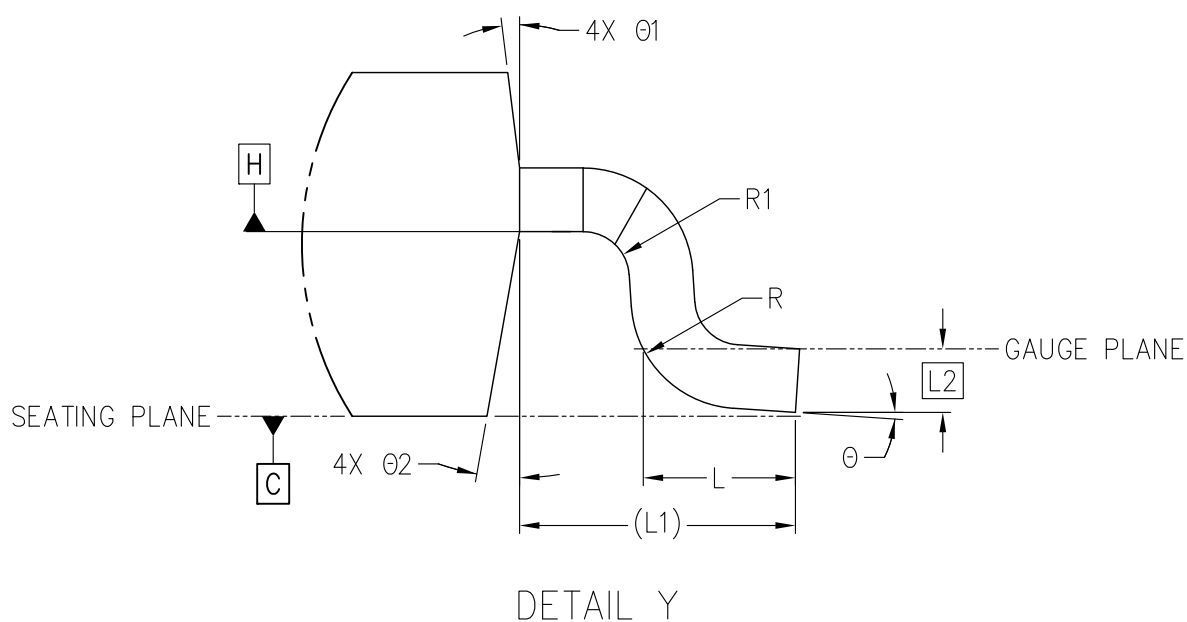
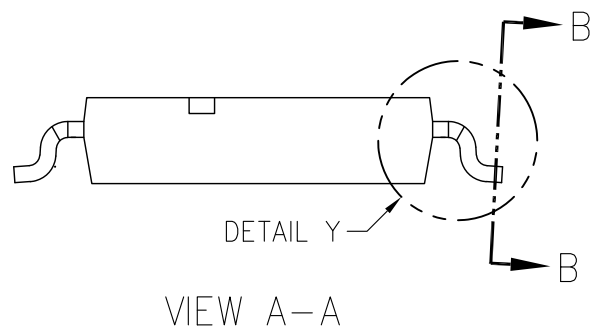
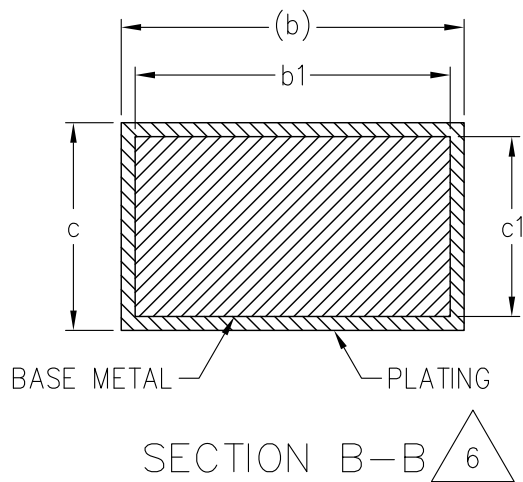




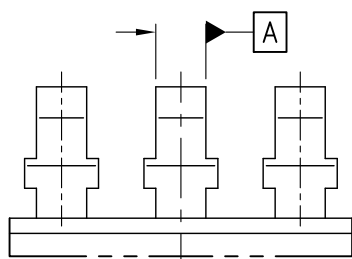
BOTTOM VIEW

THIS *REGISTERED OUTLINE* HAS BEEN PREPARED BY THE JEDEC JC-11 COMMITTEE AND REFLECTS A PRODUCT WITH ANTICIPATED USAGE IN THE ELECTRONICS INDUSTRY; CHANGES ARE LIKELY TO OCCUR.

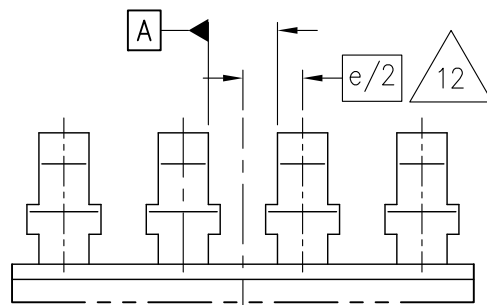
SHEET  
1 OF 5



ODD TERMINALS  
PER SIDE



EVEN TERMINALS  
PER SIDE



DETAIL Z

TABLE 1

COMON DIMENSIONS				
SYMBOL	MIN	NOM	MAX	NOTES
Z	1.30	1.35	1.40	
Z1	−0.04	0.01	0.06	
b	0.402	---	0.460	7, 8
b1	0.395	0.42	0.445	7, 8
c	0.249	---	0.273	7
c1	0.242	0.25	0.258	7
X	5.05	5.15	5.25	3, 4
X1	4.45	4.55	4.65	11
Y	7.48	7.68	7.88	
Y1	5.38	5.48	5.58	3, 4
Y2	3.76	3.86	3.96	11
e	1.00 BASIC			
L	0.55	0.65	0.75	
L1	1.10 REF			
L2	0.25			
R	0.18	---	---	
R1	0.18	---	---	
N	10			6
θ	1° – 7°			
θ1	7° REF			
θ2	10° REF			
NOTES	1, 2,			
REF	11–1005			
ISSUE	A			

TABLE 2

TOLERANCE OF FORM AND POSITION	
SYMBOL	VALUE
aaa	0.20
bbb	0.20
ccc	0.08
ddd	0.25
fff	0.20
NOTES	1, 2
REF	11-1005
ISSUE	A

NOTES:

1. DIMENSIONING AND TOLERANCING PER ASME Y14.5–2009.

2. ALL DIMENSIONS ARE IN MILLIMETERS (ANGLES IN DEGREES).



DIMENSION "X" DOES NOT INCLUDE MOLD FLASH, PROTRUSION OR GATE BURRS. MOLD FLASH, PROTRUSION OR GATE BURR SHALL NOT EXCEED 0.15 MM PER END. DIMENSION "Y1" DOES NOT INCLUDE INTERLEAD FLASH OR PROTRUSION. INTERLEAD FLASH OR PROTRUSION SHALL NOT EXCEED 0.25 MM PER SIDE. "X" AND "Y1" DIMENSIONS ARE DETERMINED AT DATUM H.



THE PACKAGE BOTTOM MAY BE SMALLER THAN THE PACKAGE TOP, DIMENSION "Y" AND "Y1" ARE DETERMINED AT THE OUTERMOST EXTREMES OF THE PLASTIC BODY EXCLUSIVE OF MOLD FLASH, TIE BAR BURRS, GATE BURRS AND INTERLEAD FLASH, BUT INCLUDING ANY MISMATCH BETWEEN THE TOP AND BOTTOM OF THE PLASTIC BODY.

5. "N" IS THE MAXIMUM NUMBER OF TERMINAL POSITION FOR THE SPECIFIED PACKAGE



THE DIMENSION APPLY TO THE FLAT SECTION OF THE TERMINAL BETWEEN 0.10 TO 0.25 MM FROM THE TERMINAL TIP.



DIMENSION "b" DOES NOT INCLUDE DAMBAR PROTRUSION. ALLOWABLE DAMBAR PROTRUSION SHALL BE 0.10 MM TOTAL IN EXCESS OF THE "b" DIMENSION MAXIMUM MATERIAL CONDITION. THE DAMBAR MAY NOT BE LOCATED ON THE LOWER RADIUS OF THE FOOT.



PIN 1 IDENTIFIER MUST BE LOCATED WITHIN THE INDEX AREA INDICATED.



"Z1" IS DEFINED AS THE VERTICAL DISTANCE FROM THE SEATING PLANE TO THE LOWEST POINT ON THE PACKAGE BODY EXCLUDING THE LID AND OR THERMAL ENHANCEMENT ON CAVITY DOWN PACKAGE CONFIGURATIONS.



"X1" AND "Y2" MINIMUM DIMENSIONS OF THERMALLY ENHANCED TYPES ARE VARIABLES DEPENDING ON DEVICE FUNCTION (DIE PADDLE SIZE) "X1" AND "Y2" MAXIMUM DIMENSIONS CAN BE EQUAL TO "X" AND "Y1" MAXIMUM DIMENSIONS. END USER SHOULD VERIFY ACTUAL SIZE OF EXPOSED THERMINAL PAD FOR SPECIFIC DEVICE APPLICATION.



THE LOCATION AND SIZE OF MOLD CHASSIS ID CODE ARE OPTIONAL.



DATUM A TO BE DETERMINED AT DATUM H.

# STP (3D) FILE RECORD

3D FILE NAMES MAY EXCEED LENGTH REQUIREMENTS FOR SOME SOFTWARE TOOLS.

STP FILE NAME	DATE	ITEM NUMBER
MO-351A_PDS0-G10_I1p0-R5p25x5p58Z1p4-N7p88T0p273	JUN 2022	11-1005

TASK GROUP CONTRIBUTORS

INFINEON TECHNOLOGIES AG

# CHANGE RECORD

IF THE CHANGE INVOLVES ANY WORDS ADDED OR DELETED (EXCLUDING DELETION OF ACCIDENTALLY REPEATED WORDS), THE CHANGE IS TO BE INCLUDED BELOW. PUNCTUATION CHANGES MAY OR MAY NOT BE INCLUDED.

INITIAL ISSUE: A	DATE: JUNE 2022	ITEM NUMBER: 11-1005
------------------	-----------------	----------------------

CHANGE RECORD HISTORY:
------------------------

INITIAL ISSUE: -	DATE: -	ITEM NUMBER: -
------------------	---------	----------------

LOCATION:	CHANGED FROM:	CHANGED TO: